

**BALLISTIC PROTECTION**

# RoofPRO



CV9035 NL with RoofPRO-P



Bomblet

**➤ DESCRIPTION**

Artillery bomblets remain a potent threat to all poorly protected armoured vehicles in operation today. To minimise this threat RUAG Defence has developed a highly effective protection kit which can be fitted to existing vehicles. The kits are specifically designed to offer substantial improvements in protection, without compromising the functionality of the original vehicle. Their light-weight and adaptability to any contour and shape makes them highly flexible in deployment.

### ➤ KEY FIGURES & QUALIFICATIONS

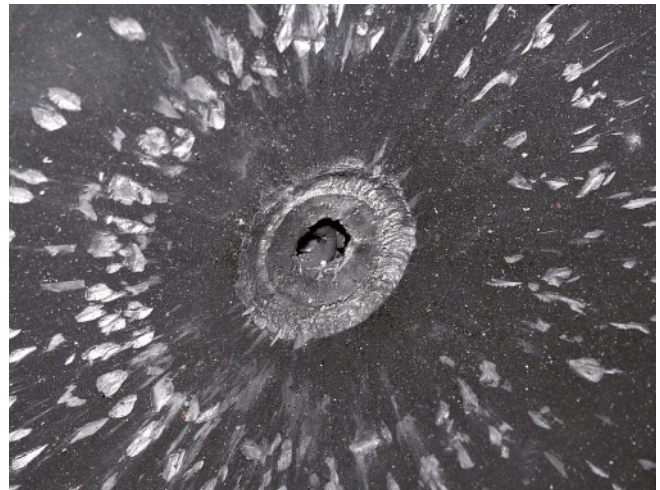
Area density RoofPRO-P	43 kg/m <sup>2</sup>
Area density RoofPRO-PL	28 kg/m <sup>2</sup>
Height	max. 31 mm
Hit angle	up to 60°
Environmental qualification	STANAG 2895

### ➤ IMPROVED PROTECTION AGAINST

- Bomblets deployed by 120 mm mortars
- Bomblets deployed by 155 mm artillery systems
- Fragments from artillery grenades

### ➤ HOW ROOFPRO PROTECTS

- Completely hinders the penetration of CE rounds
- Increases protection against artillery fragments
- Reduces the vehicle's IR signature



### ➤ BOMBLET IMPACT ON ROOFPRO-P

The copper jet is absorbed by the protection and the vehicle's roof is not penetrated.

### ➤ BOMBLET IMPACT WITHOUT ROOFPRO-P

Without the protection the vehicle's roof is penetrated by the copper jet.

### ➤ TECHNICAL CHARACTERISTICS

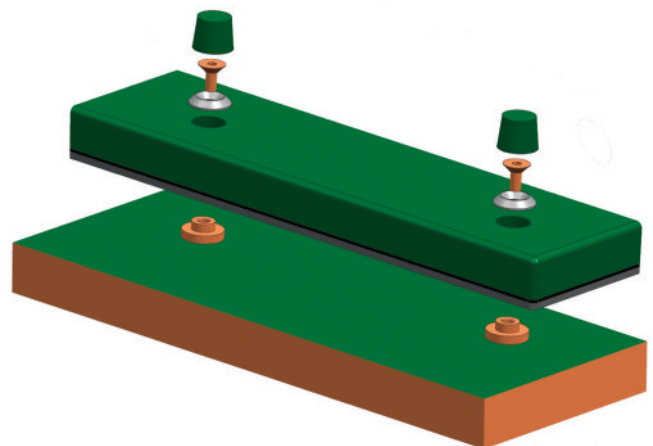
A low profile ensuing optimised periscope view

Fully adaptable to any contour and shape

Integrated anti-slip surface

### ➤ COMPOSITION

The RoofPRO's protective plates are easily attached to the vehicle's roof, for swift assembly and disassembly.



Representative diagram  
of how the RoofPRO is attached