

CAST-easy

Electronic chaff-and-flare simulator



➤ Simplify your training on airborne self-protection systems with RUAG's flyable CAST-easy – a unique electronic chaff-and-flare simulator for simple and effective testing of the dispenser unit.

DESCRIPTION

CAST-easy (Countermeasure Advanced Safety Test Equipment) reduces systematic risk by providing effective training, preventive testing and troubleshooting of self-protection solutions.

It is a unique electronic chaff-and-flare simulator for simple and effective self-protection training of the dispenser unit. Containing no pyrotechnics, CAST-easy can be used for training purposes in the air, on the ground and in labs, and is a safe direct replacement for standard chaff-and-flare cartridges.

CAST-easy is versatile, cost-effective and easy to use.

➤ COST-EFFECTIVE

- Reusable
- Unlimited shelf life
- No maintenance required
- Easy shipping – no hazardous material, no pyrotechnics

➤ VERSATILE

- Dispensable anywhere – in the air, close to airfields, at low altitudes, on the ground, in labs
- No geographical restrictions
- Not dispenser specific

➤ BENEFITS

Clearly visible dispensing status – can be reset at the push of a button

Dispenser system can monitor firing and inventory status

No pyrotechnics – reduced logistics and handling effort

Maintenance-free

Qualified for harsh environmental conditions

Troubleshooting: end-to-end testing (combined with RUAG's missim)

RTCA/DO-160G airworthiness certified

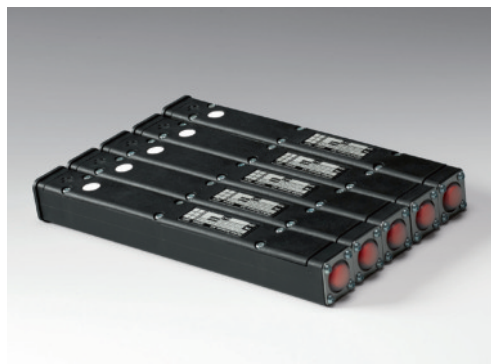
➤ SPECIFICATION DATA

| | | |
|-------------------------------------|---------------------------------------|--|
| Handling | Firing Indication | Coloured button pops to the front |
| | Reloading Procedure | Push the coloured button in |
| Durability | Loading / Unloading into Magazine | At least 500 cycles |
| | Dispensing / Reloading | At least 2000 cycles |
| Physical | Dimension | 1" × 1" × 8" (~25 mm × 25 mm × 206 mm) |
| | Weight | 110 g ±5 g |
| | Temperature (storage and operational) | -55 °C to +70 °C |
| | Altitude (storage and operational) | 50'000 ft max. |
| Electrical | Squib Characteristics | 1 Ohms ± 15% (un-fired) / open (fired) |
| | Firing Current | > 3A (dc) / 15 ms |
| | Polling Current (no fire) | < 1A (dc) / 300 s max. |
| Airworthiness Qualification acc. to | RTCA / DO-160G and MIL STD-810 G | Vibration, Shock, Temperature, Altitude, Dust, Water, Salt Spray, Icing, ESD |
| Shelf Life | unlimited | |

COMPATIBILITY

CAST-easy is not dispenser-specific, is compatible with standard 1×1" countermeasure cartridges and is qualified for use even in the harshest of environmental conditions.

To best suit your requirements and to prevent CAST-easy from being mistaken for live ammunition, this pioneering troubleshooting solution is available in a variety of colours.



➤ DISPENSING SYSTEMS USING 118 SQUARE FORMAT CARTRIDGES (SELECTION)

| | |
|----------------|------------------------------|
| BAE Systems | ALE-47, ALE-40, M-130 |
| Rokar | Smart Dispenser 1" × 1" × 8" |
| EADS Cassidian | Smart Dispenser 1" × 1" × 8" |
| MBDA | SAPHIR, SPIRIT |
| Saab EDS | BOP-L family |
| Terma | ACMDS, ALQ-213 |
| Thales | Vicon 78 Series 455 |

SHIPPING INFORMATION

- Designation: CAST-easy 118
- Packaging units: 40 pcs. packed per box
- Each shipping package includes handling instructions
- CAST-easy is subject to international export regulations
- Serial Number: 1023288-001
- NSN: 6625-42-000-2352

